



City of North Tonawanda Comprehensive Plan and Local Waterfront Revitalization Program Public Meeting #1

April 11, 2024 – 5:30 PM



**The presentation will begin promptly at 5:45
Thank you for your patience!**

If you are joining virtually – please be sure to mute yourself.

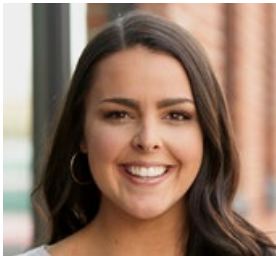


Agenda

- ◆ Welcome
- ◆ Project Teams
- ◆ Comprehensive Plan and LWRP Overview
- ◆ Project Schedules
- ◆ Outreach and Community Participation
- ◆ Deliverables
- ◆ Activities



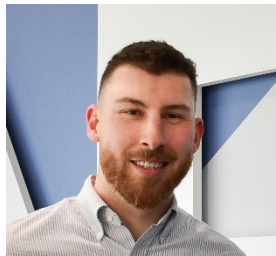
The Team



Emma Phillips, AICP
Project Manager



Daniel Riker, P.G.
Planning



Tom Voigt
Planning



Molly Vendura
**Comprehensive Plan & LWRP
Visualization / Landscape
Architecture**



Mike Kane & Jenny Mogavero
**Comprehensive Plan & LWRP
GIS/Mapping**



Chuck Bell & Michael Zimmerman
**Comprehensive Plan
Planning**



Joy Kuebler & Alex Kane
**Comprehensive Plan & LWRP
Community Outreach**



Wendy Salvati
**LWRP
QA/QC**



C&S Companies

- ◆ Founded in 1968
- ◆ Over 500 professionals and tradespeople
- ◆ 20 offices in 12 states
- ◆ Headquartered in Syracuse with NY offices in Buffalo, Rochester, Binghamton, Plattsburgh, and Albany
- ◆ Full-service, project delivery specialists
 - ◆ Planning
 - ◆ Market Analysis
 - ◆ Transportation
 - ◆ Environmental
 - ◆ Civil
 - ◆ Buildings
 - ◆ Energy
 - ◆ Sustainability
 - ◆ Construction



What is a Comprehensive Plan?

- ◆ Community-driven process and document
 1. **Where are we now?** *Analysis of existing conditions*
 2. **Where are we going?** *Identification of trends*
 3. **Where do we want to be?** *Community vision & goals*
 4. **How do we get there?** *Policies, Strategies, Implementation actions*



What is the LWRP?

- ◆ A Local Waterfront Revitalization Program (LWRP) is a comprehensive **land and water use program**
- ◆ The City of NT LWRP will **define a vision** for future development along the City's waterways and **identify specific projects and policies** to achieve it
- ◆ The LWRP is intended to encourage **protection of natural resources and assist with economic development**



What is the LWRP?

- ◆ The City will be eligible to apply LWRP **implementation funding** under the NYS Environmental Protection Fund
- ◆ The LWRP provides leaders with **direction for waterfront development** informed by the public
- ◆ All local and state agencies actions must be consistent with the LWRP (**increased local control**)



What do the Plans Include?

Comprehensive Plan:

- ◆ Introduction
- ◆ Existing Conditions Analysis
 - ◆ Challenges & Opportunities
- ◆ Vision, Goals, and Strategies
- ◆ Prioritized Projects
- ◆ Implementation Matrix

LWRP:

- ◆ Establishment of Boundary (WRA)
- ◆ Inventory & Analysis
- ◆ Policy Review
- ◆ Proposed Projects
- ◆ Techniques for Implementation



Types of Projects

Comprehensive Plan:

- ◆ Streetscaping
- ◆ Updates to Zoning
- ◆ Marketing Plans
- ◆ Forming of Committees
- ◆ Building Improvements
- ◆ Prioritized infrastructure maintenance

LWRP:

- ◆ Signage
- ◆ Development of sites
- ◆ Increased access to the waterfront through parks and trails
- ◆ Flood control measures



Differences Between The Two

Comprehensive Plan

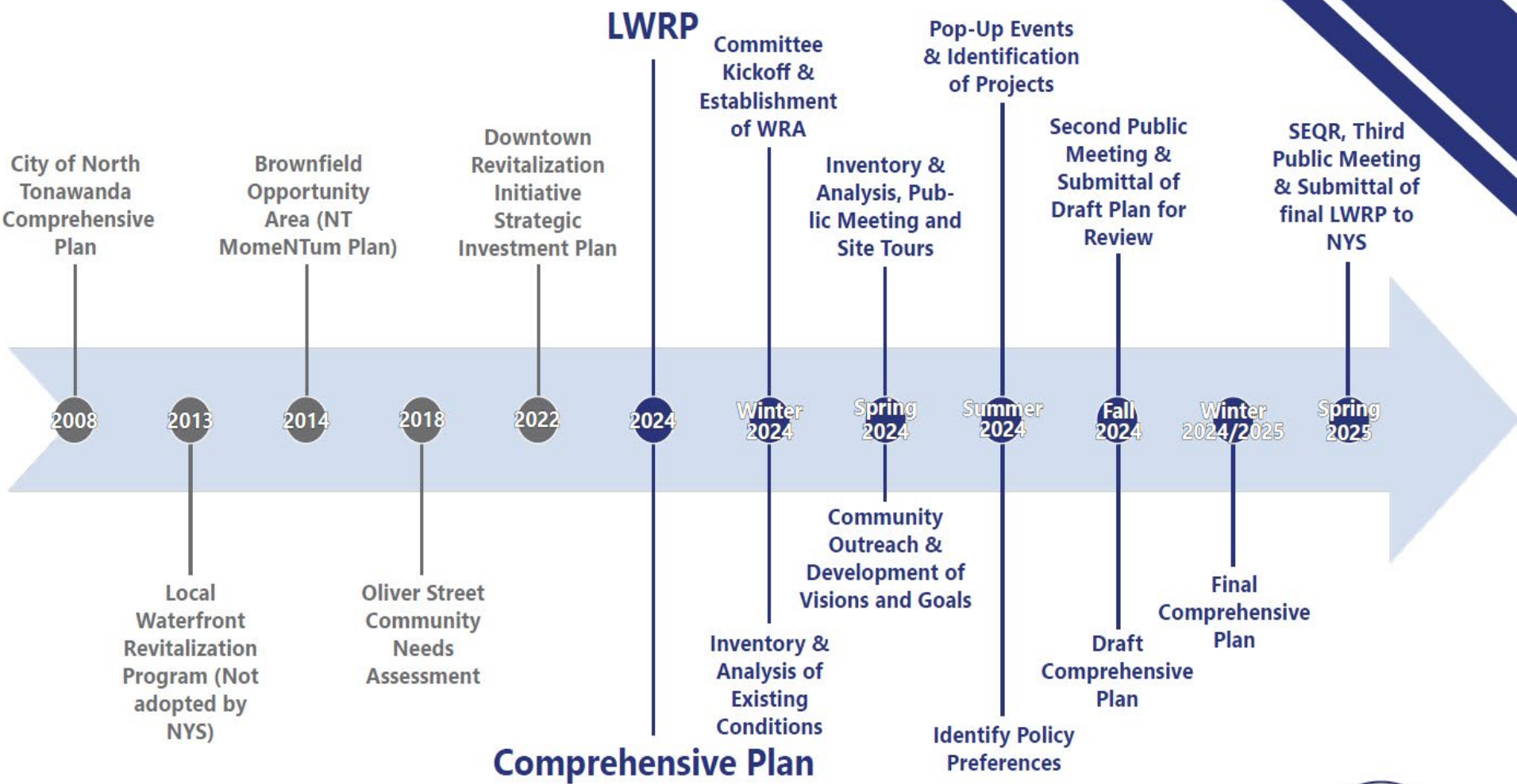
- ◆ Review existing conditions for all of NT
- ◆ Focus on land use and future regulations
- ◆ Sets the City up for implementation of projects, policies, and initiatives
- ◆ Provides funding sources, identifies responsible entities, and establishes timeframes

LWRP

- ◆ Review of only waterfront area and adjacent land
- ◆ Focus on identifying priority projects for the waterfront
- ◆ Provides planning materials (renderings, cost estimates, language) to apply for additional implementation funding



Past Planning Efforts & Project Timelines



End Results

Comprehensive Plan:

1. **Blueprint** for the next 20 years
2. **Compass** that guides decision making
3. **Playbook** for capital investments and further planning initiatives
4. **Messaging tool** to articulate community vision

LWRP:

1. **Assessment** of existing conditions along the waterfront
2. **Prioritization** of waterfront projects
3. **Recommendations** on policies for protection of the WRA
4. **Framework** for the management of the WRA



Outreach Elements

- ◆ Community Participation Plan
- ◆ Online Survey
- ◆ Public Meetings
- ◆ Site Tours
- ◆ Pop-up Event(s)/ Workshops



Engagement Objectives

- ◆ Transparency
- ◆ Equity and Inclusion
- ◆ Accessibility and Safety
- ◆ Relevance



Tonight's Activities

In the middle of the room is a large timeline! This activity allows us to recall the past, capture today, and invites you to create a future. This activity is perfect for both the Comprehensive Plan and the LWRP.

On the left side of the room will be activities geared towards the LWRP. There is a Strengths and Weaknesses analysis activity. There is also an activity looking at various types of water users and the places they use most.

On the right side of the room will be activities geared toward the Comprehensive Plan. One activity includes mini survey responses. Another activity includes a collage activity imagining the future of North Tonawanda.



Questions

Questions or Comments?

Take the survey here:



Website URL here:

<https://www.surveymonkey.com/r/XZNX9LM>

Stay up to date by
visiting the project
landing page:

www.lumbercitydc.com/local-waterfront-revitalization-plan-and-comprehensive-plan

